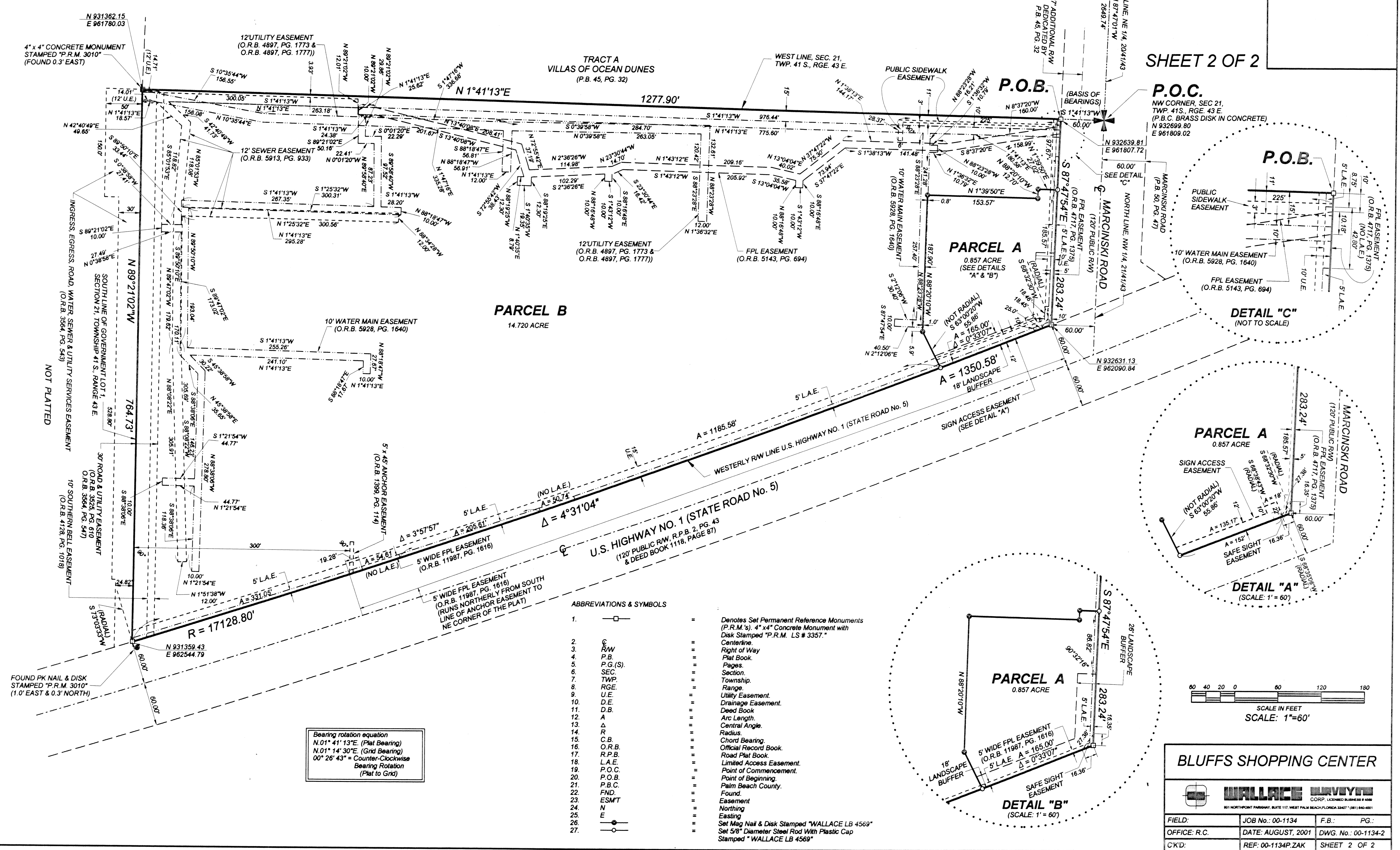


# BLUFFS SHOPPING CENTER

BEING A PARCEL OF LAND LYING IN SECTION 21, TOWNSHIP 41 SOUTH,  
RANGE 43 EAST, TOWN OF JUPITER, PALM BEACH COUNTY, FLORIDA.  
OCTOBER, 2001

169

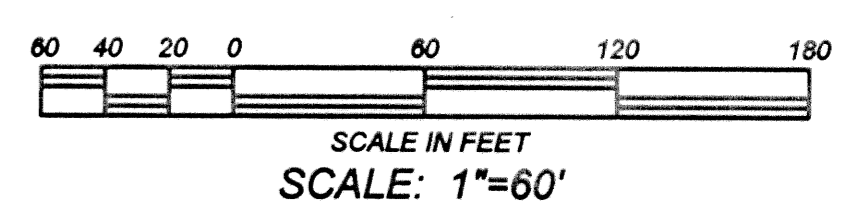
SHEET 2 OF 2



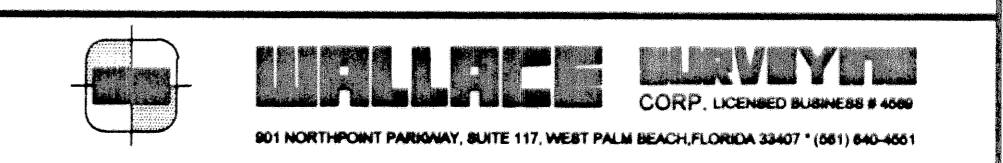
### ABBREVIATIONS & SYMBOLS

- |     |   |
|-----|---|
| 1.  | Denotes Set Permanent Reference Monuments (P.R.M.'s). 4" x 4" Concrete Monument with Disk Stamped "P.R.M. LS # 3357." |
| 2.  | Centerline.   |
| 3.  | Right of Way  |
| 4.  | Plat Book.  |
| 5.  | Pages.  |
| 6.  | Section.  |
| 7.  | Township.   |
| 8.  | Range.  |
| 9.  | Utility Easement.   |
| 10. | Drainage Easement.  |
| 11. | Deed Book.  |
| 12. | Arc Length.   |
| 13. | Central Angle.  |
| 14. | Radius.   |
| 15. | Chord Bearing.  |
| 16. | Official Record Book.   |
| 17. | Road Plat Book.   |
| 18. | Limited Access Easement.  |
| 19. | Point of Commencement.  |
| 20. | Point of Beginning.   |
| 21. | Palm Beach County.  |
| 22. | Found.  |
| 23. | Easement  |
| 24. | Northing  |
| 25. | Easting   |
| 26. | Set Mag Nail & Disk Stamped "WALLACE LB 4569"   |
| 27. | Set 5/8" Diameter Steel Rod With Plastic Cap Stamped "WALLACE LB 4569"  |

Bearing rotation equation  
 $N.01^{\circ}41'13"E$  (Plat Bearing)  
 $N.01^{\circ}14'30"E$  (Grid Bearing)  
 $00^{\circ}26'43" =$  Counter-Clockwise  
 Bearing Rotation  
 (Plat to Grid)



### BLUFFS SHOPPING CENTER



FIELD:	JOB No.: 00-1134	F.B.:	PG.:
OFFICE: R.C.	DATE: AUGUST, 2001	DWG. No.:	00-1134-2
CK'D:	REF: 00-1134P.ZAK	SHEET	2 OF 2